

Custom Fabric Cover Options

Available on all Custom Shelter Solution Products from our Direct Custom Shop or Authorized Dealers



† Polyethylene (PE) Standard: 9 oz.

Steel Gray / Forest Green / Arctic White / Tan / Clearview (Trasnlucent)

†* Polyethylene (PE) Heavy-Duty: 14.5 oz.

Steel Gray / Forest Green / Arctic White / Tan

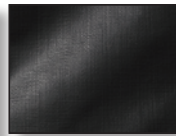
†* Polyvinyl Chloride (PVC) Ultra-Duty: 21.5 oz. [More Info](#)

Hunter Green Only

COLOR OPTIONS



Steel Gray



Forest Green



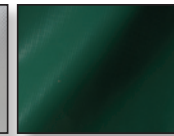
Arctic White



Tan



Clearview



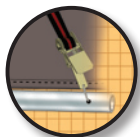
Hunter Green



UV-treated inside and out with added fade blockers, anti aging, anti-fungal agents. White interior lining enhances illumination.



Triple-layer, polyethylene, and polyvinyl chloride rip-stop weave fabric cover is hot air fused at the seams and 100% waterproof.



Rugged Ratchet Tite™ tensioning for quick and easy cover installation.



Easy Slide Cross Rail system locks down and squares up covers.

† All fabric weight calculations are in oz. per m².

* Fire rated FR fabric CPAI 84 Section 6 compliant.

	WARRANTY INFO		
	Cover	Back Panel/Door	Frame
Standard	1 year	1 year	1 year
Heavy Duty	10 years	3 years	3 years
PVC	10 years	3 years	3 years

PVC WeatherSpan Fabric Cover

Now Available on all **Custom Shelter Solution Products** from our **Direct Custom Shop** or **Authorized Dealers**



TEST	*TEST METHOD	MINIMUM REQUIREMENT
Adhesion	5970	19
Tear	5134	Warp- 51 Fill- 51
Flame Retardance	5903	2.0 sec- 6.0" char
4" Tensile	5100	Warp- 220 Fill- 200
1" Before Abrasion Tensile	5102	Warp- 220 Fill- 200
1" After Abrasion Tensile	5304	Warp- 220 Fill- 200
Cold Temperature Resistance	5874	-40
Weight (oz-yd)	5041	17.0-19.0
Hydrostatic (psi)	5512	345
Width		+1/4" – 1/8"

ShelterLogic WeatherSpan PRV 1810R PVC Fabric meets all state requirements including California for flame retardant including:
CPAI-84 – Section 6 and NFPA-701 Large Scale.

* Test Method numbers refer to **FEDERAL Standard # 191-A Textile Test Methods.**

NOTE: This technical data is based on ShelterLogic and US Government test Methods and is accurate to the best of our knowledge at the time of printing. Single Values should not be interpreted as a specification without consulting ShelterLogic and/or its fabric suppliers.

ShelterLogic and its fabric suppliers reserves the right to change the method of construction, performance capability and/or contents of its products without prior notice.